

THE WAY FORWARD

Basketball WA Update

New Fee Structure

At the Special General Meeting in February 2018 the sport of basketball voted to adopt a new membership fee structure of \$30 per person, per annum to bring equity to the sport across the State between its members.

THE STRATEGY FOR 2020 & BEYOND

REGIONAL DEVELOPMENT
Ensuring the development of
the game across the State.

FUTURE PRIORITIES

The BWA Fee Structure to Change

At the February 2018 Special General Meeting the sport of basketball voted to remove the old composite fee model and bring in the equitable individual affiliation fee charge of \$30 per person across the State. Bringing the Metro Associations in line with the Country Associations.

Members have always paid affiliation fees to Basketball WA (BWA), previously in the metro area this was done through what we call a Composite Fee model. This is where

the association paid a lump sum to BWA and included in your Club fees, an amount that went towards the Composite Fee.

BWA will no longer charge the Metro Associations the composite fee as individual members will pay their affiliation directly to BWA.

The \$30 fee will be an annual fee for all affiliated basketballers, junior and senior, across the State.

CURRENT ISSUES

- The previous fee structure was outdated and inequitable across clubs.
- The Metropolitan Affiliation Fees were not in line with the sport's needs and requirements.
- Nationally there is a requirement to have individual registration.
- The sport's strategy was underfunded and there was a need for the sport to invest in growth and innovation.

ALL MEMBERS WILL NEED TO REGISTER ONLINE VIA "SPORTSTG" AND PURCHASE THE BWA LICENCE \$30.00, ANY NEED TO PURCHASE MEMBERSHIPS USING A KIDSPORT VOUCHER WILL NEED TO BE ARRANGED DIRECTLY WITH YOUR CLUB AFTER REGISTERING ONLINE.

365 DAY LICENCE

The affiliation fee is structured to be paid annually whenever you register for the first time in that year and then annually after that. If you register again for a different team or league,

your registration will still be valid until the 365 days expires and then you will need to renew your licence. The licence is your registration for affiliation and insurance.

- PAY IT ONCE AND ONLY ONCE PER ANNUM NO MATTER HOW MANY TIMES OR WHO YOU REGISTER WITH IN THE STATE.

- IT PROVIDES 365 DAYS WORTH OF COVER AND AFFILIATION TO BASKETBALL WA AND BASKETBALL AUSTRALIA

Fee Clarification

The fee is not a new fee, the structure and the way we receive it is new, as members now pay the fee directly to BWA.

- All Metro Associations used to pay affiliation fees to BWA on behalf of their members through the Composite Fee Model.
- This model was outdated and inequitable as it was based on an historical basis that was no longer relevant.
- The imbalance meant that smaller associations were at a disadvantage compared to larger ones and the divide was getting larger.
- Country Associations have been paying an individual registration fee for a long time now and have been effectively paying a lot more per head, than the Metropolitan Associations.
- Each club has different cost structures and expenses due to the nature of their lease arrangements, court hire fees and employee costs, so comparisons across clubs are unrealistic.
- Will my association fees come down? Not necessarily, while the association will no longer pay the composite fee to BWA each club has cost pressures and sets fees yearly so this will be an Association by Association decision.
- Is my club the only one moving to this system? No every club will be moving to this system and every member across the state will need to register individually and pay the \$30 fee.
- The introduction of this method is not a choice for members as all members must be affiliated and get their insurance via this fee.
- The introduction of the individual registration fee of \$30 means it is very transparent what you pay for State and National Registration Affiliation compared to your club and association fees.
- Associations will still pay any relevant competition fees as these are separate but will no longer pay any composite affiliation fees to BWA.



The role and responsibility of Basketball WA is explained briefly below.

Basketball WA is the State Affiliate Body of Basketball Australia and represents the sport to State and Federal Governments and other key stakeholders regarding basketball in this state. In addition its role is the following:

- ✓ covers players and associations for insurance related to basketball activities across public liability, personal accident, professional indemnity as well as management liability to name a few.
- ✓ development of pathways for officials / coaches / players and volunteers.
- ✓ access to BWA's competitions, products, services and events.
- ✓ affiliation to national and international bodies.
- ✓ education, training and professional development of members and volunteers.
- ✓ access to national database infrastructure and competition management systems.
- ✓ elite and sub-elite pathway development for high performance.
- ✓ government and non-government funding support.
- ✓ access to national IP and policy development resources.
- ✓ facility development support through local, state and national funding opportunities.

EVERYONE'S
GAME
2020 ...



Strategic Plan

- REGIONAL DEVELOPMENT
- ASSOCIATION DEVELOPMENT
- COACH & OFFICIALS DEVELOPMENT
- 3X3 / COMMUNITY / SCHOOLS
- VOLUNTEERS
- FACILITIES

Basketball's Priorities

The new fee structure will provide some much needed additional funds to invest in the Strategic Plan for basketball in this state. BWA has already been investing in additional servicing over the past two years to assist with the growth of basketball across the State.

Regional Development

Currently basketball has 56 regional affiliates spread across the nine regional areas of Western Australia, with just under 20,000 players. In regional areas there is a focus to support and assist the Country Associations with the pressures associated with running and driving

the growth of basketball.

Over the past year or so we have developed regional development plans linked to the BWA Strategic Plan and have been working towards resourcing outcomes in the regional areas. Some of the additional funds will support a fulltime Development

Continued.....

Officer and Development Manager within the Great Southern and SouthWest areas respectively. In addition BWA is working with Basketball Kimberley to develop their regional plan and have placed a part-time Director of Development to oversee the development of their Regional Plan. BWA is working with our affiliated associations on solutions to grow and maintain the sport in the Pilbara, Wheatbelt, Goldfields, Midwest, Gascoyne and Peel.

Association & Volunteers Development

BWA has created a new position of Association Development Officer to work with member associations in the increasingly difficult space around governance and policy implementation and development. In addition the role will look to develop resources and programs to assist in the recruitment, training and development of volunteers as these are key to our delivery model.

Coach Development

BWA recently created a role of Coach Development Manager which was taken up by David Naylor. David has already had a significant impact on the number of Coaches accredited from Community level through to the State level. David's focus over the coming years will be to develop the tools and resources to continually develop the coaches post accreditation and provide a resource to the associations to work with, to develop their pool of available coaches.

3X3 / Community & Schools

BWA has recently created a new position of Participation Officer to work with member associations in the participation space, growing our reach into schools and introductory programs. A focus will also be developing links with the broader community through the advent of 3X3 opportunities to engage youth and local governments, giving basketball a strong foothold into the community and increasing participation.

Competitions Administrator

BWA has created a new position of Competitions Administrator to strengthen the delivery and service capability of our competitions team, allowing for an expanded brief into the competitive 3X3 pathway as well as further enhancing our WABL and SBL capabilities and resources to allow a more strategic approach to developing two of our premium products. In addition the Competitions Team will be looking to assist associations with the delivery of regional events to grow the sport.



Deputy CEO & Participation Manager

BWA has recently reviewed its structure so as to deliver a better service and focus on strategic issues such as planning, funding, facilities and stakeholder engagement, we have replaced the roles of Chief Operating Officer with the Deputy CEO role and a Participation Officer with a Participation Manager role. These roles should increase BWA's ability to assist the basketball community with the strategic challenges that lay ahead for the sport, areas that BWA has not traditionally been active in.

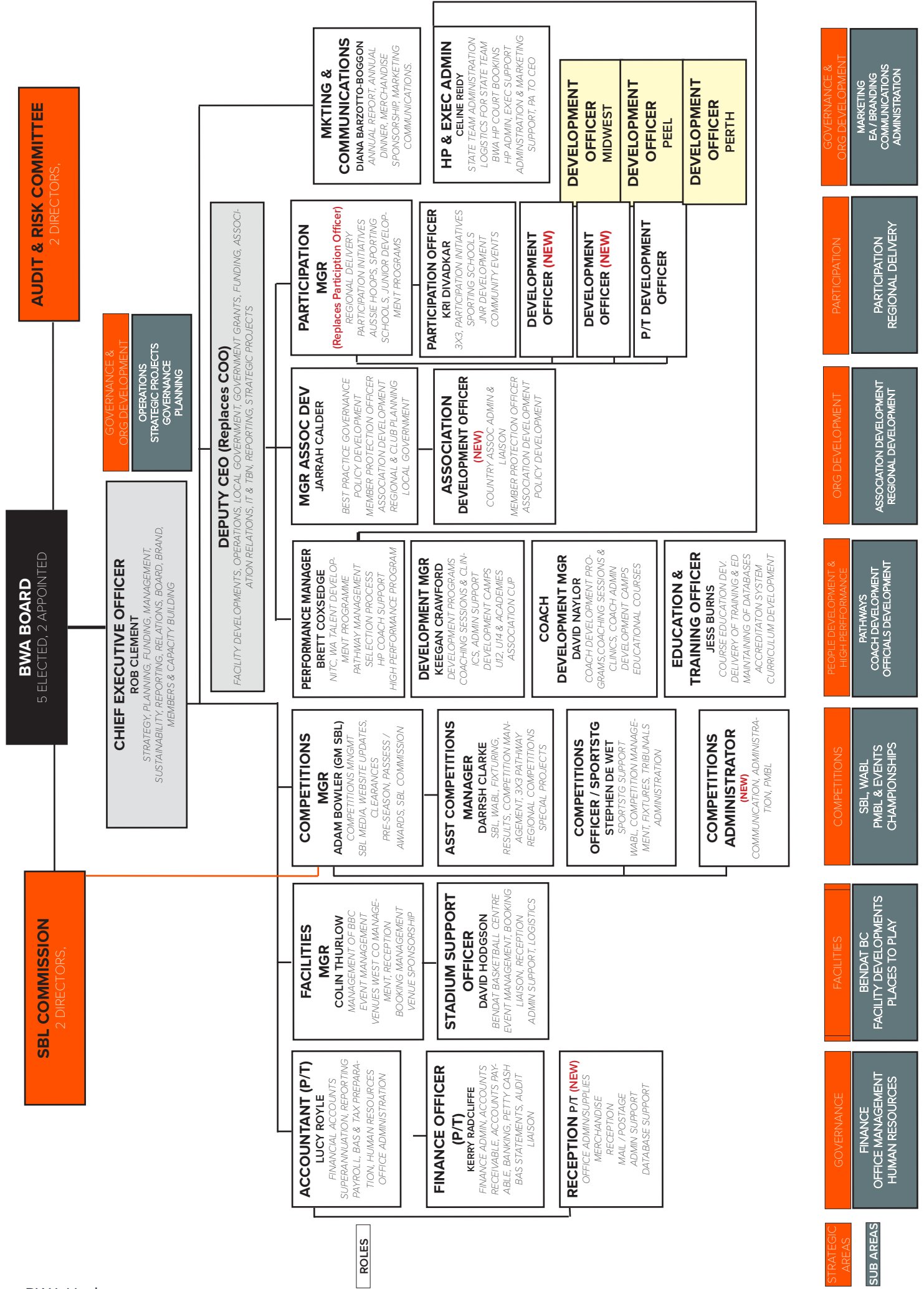
Summary

■ Additional fees will go towards the restructure of BWA services and capability building.

■ The Sport is better placed to meet the needs of the future and support the development and growth of basketball through supporting our association's growth.

■ BWA has already started to invest more into regional delivery, participation, coaching and referee development as the need was significant and overdue. Some additional funds will make this investment sustainable and ongoing.

■ BWA is an upward funded sport and does not receive significant funds from the NBL or national body. With the new fee structure BWA will still receive less funds than its similar competitive sports in Perth. We are confident that even with this position we believe that we can still achieve significant outcomes with reduced funding opportunities.



COMPARISONS

Some comparisons below between sports and other basketball state bodies.

Other Sports

Whilst we are not increasing our costs because we are the cheapest, it is interesting and relevant to note that compared to the other major team sports for which we compete for leisure time, local and state government resources, we will still be the cheapest charge of affiliation fees from state body to the members.

➤ AVERAGE SSA AFFILIATION FEES PER SPORT

SPORT	JUNIOR	SENIOR
BASKETBALL (COUNTRY WA) PRE 2018	\$16-22	\$27
NETBALL	\$54	\$59
RUGBY	\$135	\$250
HOCKEY	\$40	\$128
FOOTBALL (SOCCER)	\$37	\$81

Other Basketball State Bodies

Again while BWA understands that each state has its own nuances, WA has the largest geographical area to support with 67 affiliated association's from Esperence in the south-east to Broome in the north and all in between. Even after we complete the fee adjustment, we will still be the cheapest across all our comparative state associations, many with less issues to address than WA.

New Fee Structure of \$30 per person per annum (sub juniors, juniors & seniors)

The New Fee Structure of \$30 per person, per annum, we believe is fair and reasonable in the current market and was made with relevance to comparisons as well as the sport's requirements. The new fee will now show exactly how much is contributed towards supporting the organisational infrastructure of the sport.

➤ CURRENT COMPARABLE AFFILIATION FEES PER STATE

SPORT	SUB-JUNIOR	JUNIOR	SENIOR
COUNTRY WA PRE 2018	\$16	\$22	\$27
NSW	\$35	\$53	\$72
VIC COUNTRY	-	\$39	\$39
QLD	\$27.80	\$57.80	\$57.80
SA	\$21.65	\$29.25	\$36.90, COUNTRY \$46.61
ACT	PER PERSON PER SEASON (2 SEASONS PER YEAR)	\$45.72	\$45.72
TAS	\$30	\$30	\$55



more people playing
Basketball everywhere...

...from shooting a **hoop** to the **Olympics**

taking back the **STREETS...**

...**MORE** than a sport.

